

Continuous Temperature, Humidity & Liquid Profiling

Joint NCAR – UOP Seminar

25 September 2008

Randolph (“Stick”) Ware

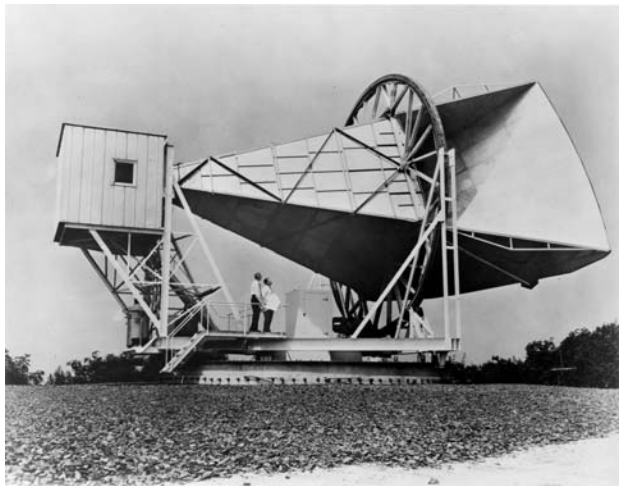
Chief Scientist, Radiometrics Corporation

Visiting Scientist, NCAR Mesoscale and Microscale Meteorology Division

(point to callouts at upper left of each slide for presentation notes)

Presentation Summary

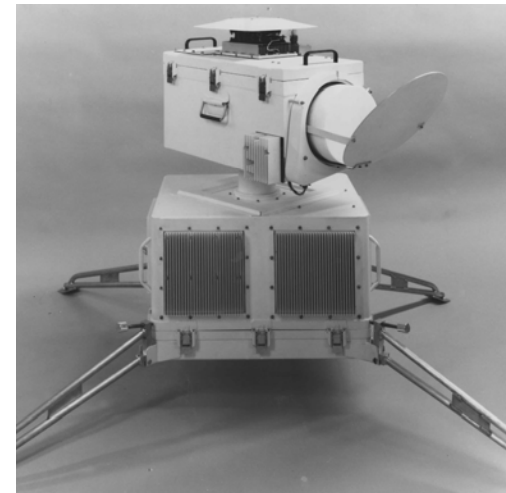
- Surface-based passive microwave & infrared remote sensing -- basic physics and method
- Continuous temperature and humidity profiling with accuracy equivalent to radiosondes
- Liquid profiles for precipitation forecasting and climate research
- Colorado tornado case study



1963 Bell Labs



1978 NOAA Labs



1986 NASA JPL



1990 Radiometrics



2005 Radiometrics



2008 Radiometrics

Evolution of microwave radiometer technology for atmospheric remote sensing



Basic Physics and Retrieval Method

- Hyperspectral microwave observations are converted to brightness temperatures using the Planck Radiation Equation.
- Air temperature, humidity and liquid structures are linked to brightness temperatures by Radiative Transfer Equations.
- Neural Networks convert brightness temperatures to temperature, humidity and liquid profiles.

Planck Radiation Equation

$$B_{\nu}(T) = \frac{2h\nu^3}{c^2} \frac{1}{(\exp(h\nu/kT) - 1)}$$

Radiative Transfer Equation

$$B_{\nu}(T_b) = B_{\nu}(T_c) \exp(-\tau_{\nu}) + \int_0^{\infty} B_{\nu}(T(s)) \alpha_{\nu}(s) \exp\left(-\int_0^s \alpha_{\nu}(s') ds'\right) ds$$

Westwater et al., Principles of Surface-based Microwave and Millimeter wave Radiometric Remote Sensing of the Troposphere, Quaderni Della Societa Italiana Elettromagnetismo, 2005 (http://radiometrics.com/Rad_rev_05.pdf).



Water Vapor

Oxygen

Liquid Water

22-30 GHz

51-59 GHz

22-59 GHz

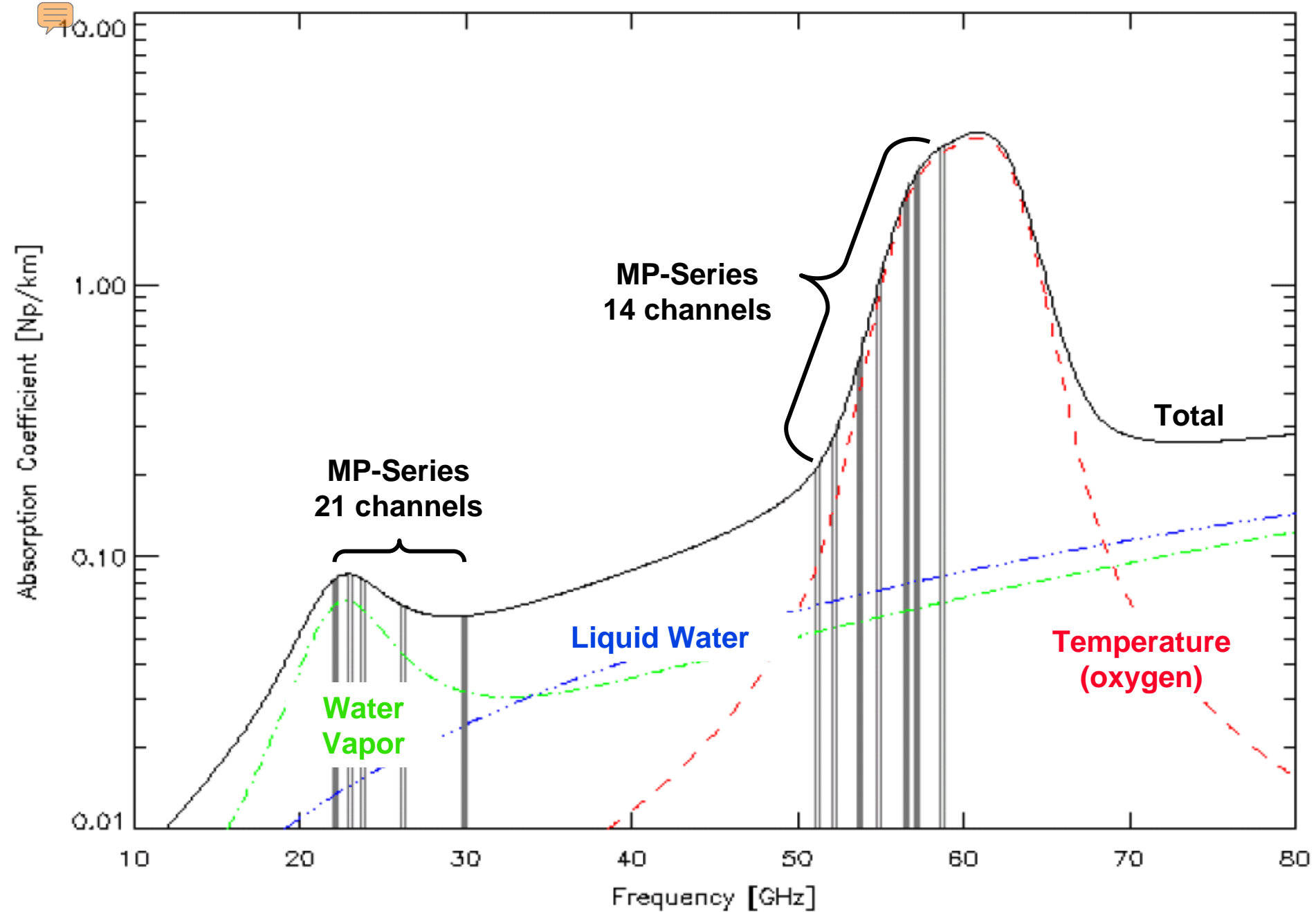
9-11 μ



Neural networks convert hyperspectral microwave, surface met and infrared observations into temperature, humidity & liquid profiles.

Retrieving Atmospheric Profiles

- A hyperspectral sensor receives a picowatt of microwave energy and converts it to brightness temperatures using Planck's Law
- Cloud base temperature is measured along with surface temperature, relative humidity and pressure
- Historical radiosonde data are forward modeled with radiative transfer equations for neural network training
- Neural network methods convert spectral microwave, infrared and surface observations to temperature, humidity and liquid profiles



Atmospheric Microwave Emission Spectrum

Photons

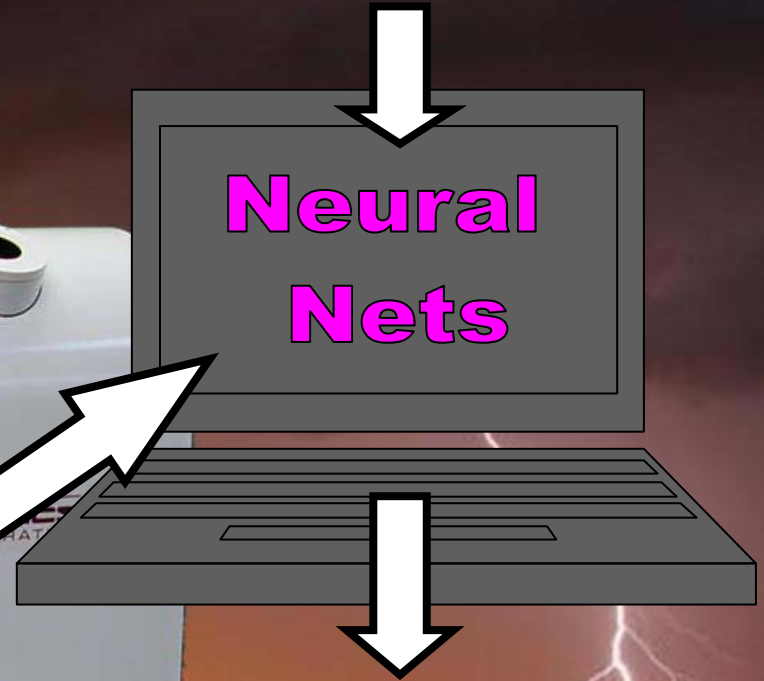
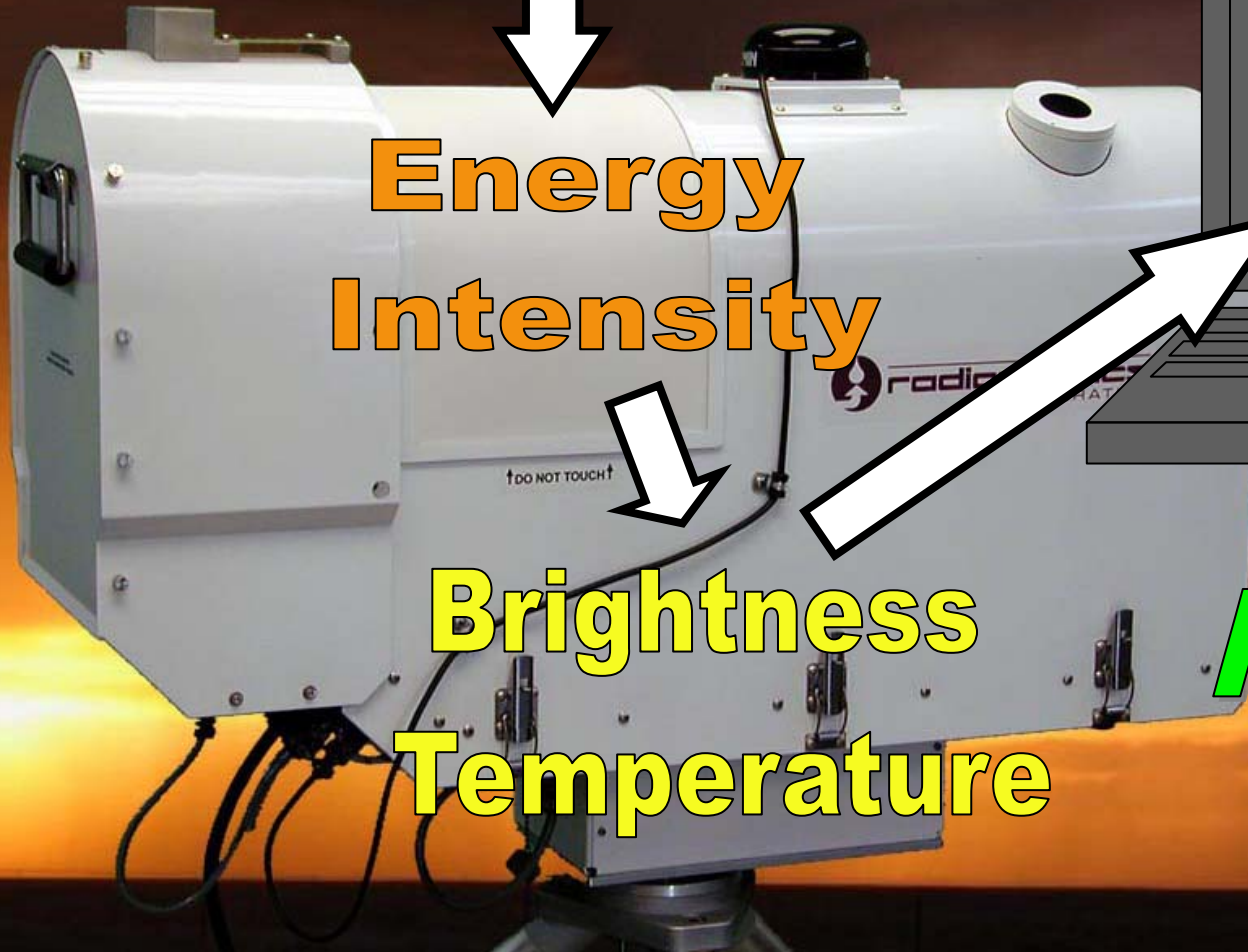
**Cloud Base Temperature
& Surface Met**

**Energy
Intensity**

**Neural
Nets**

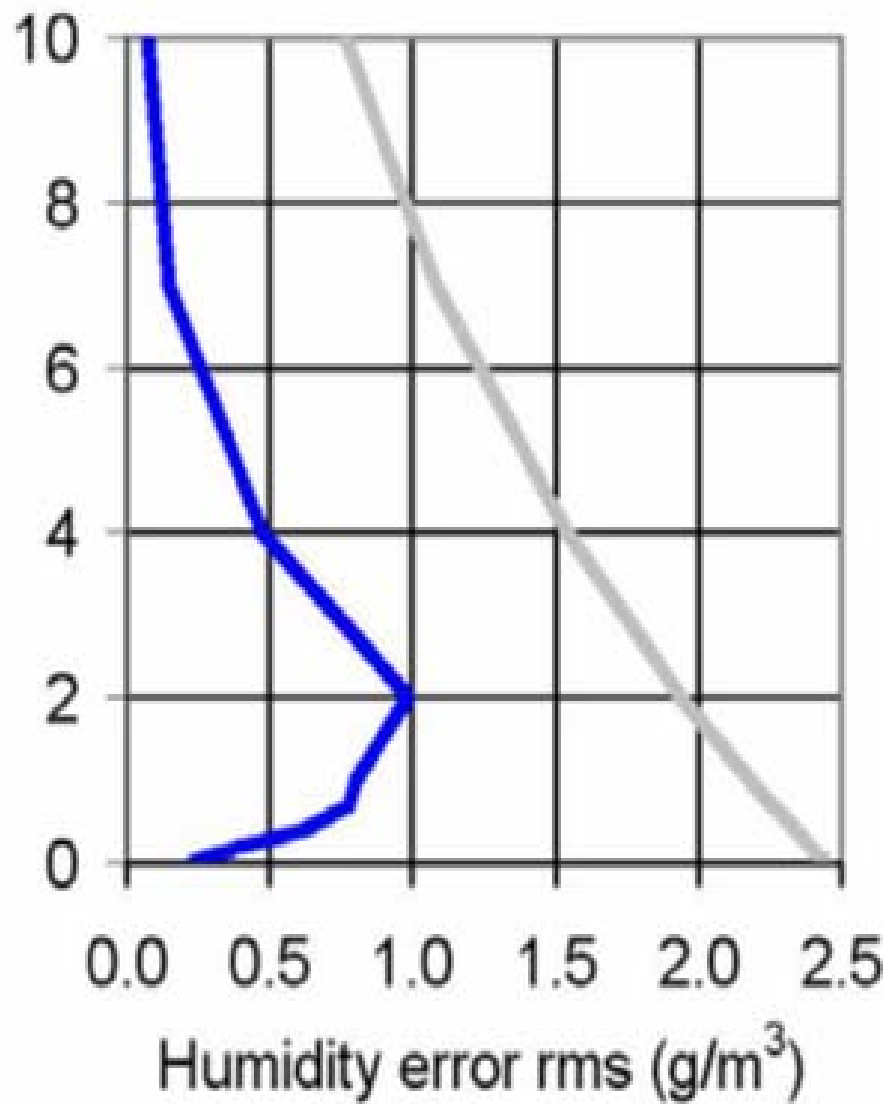
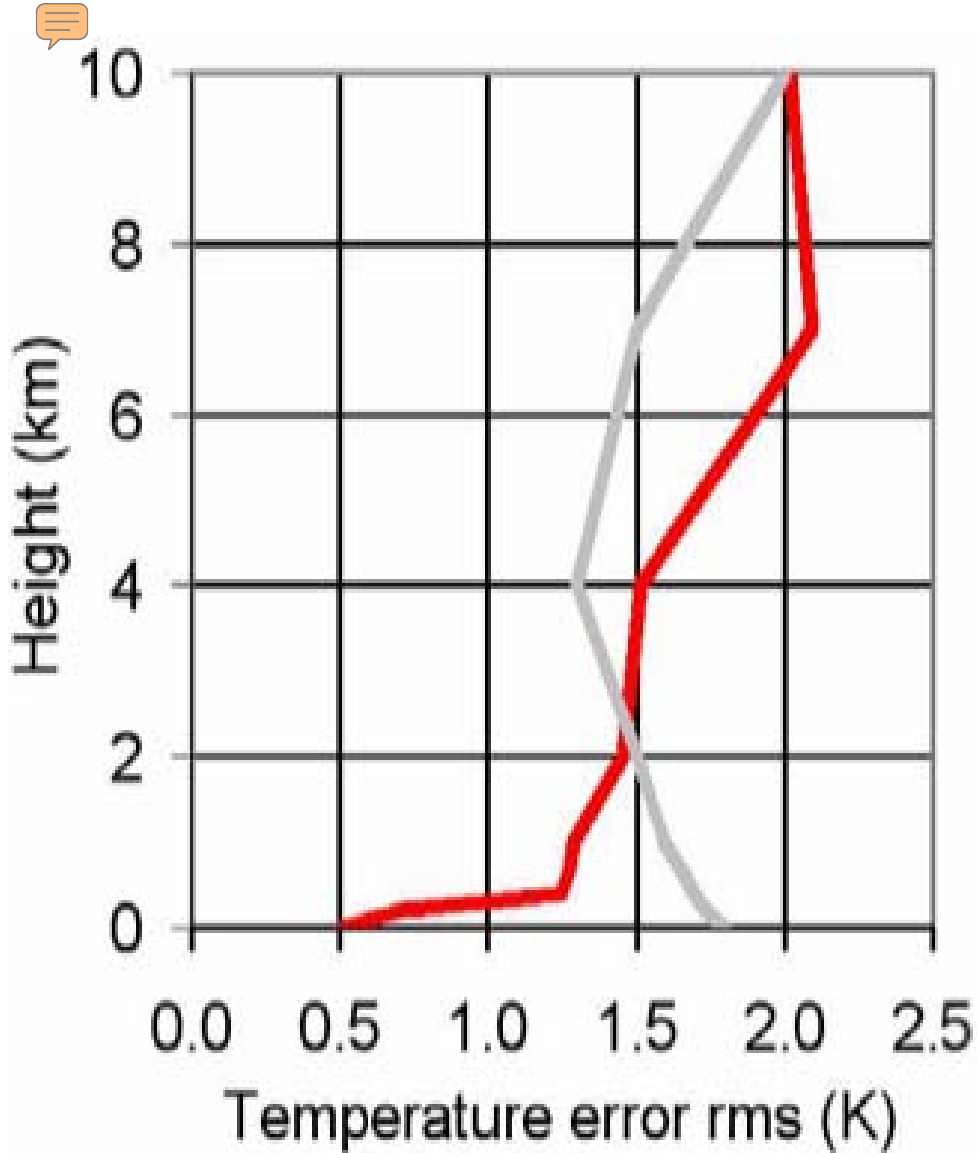
**Brightness
Temperature**

Profiles





German Weather Service radiometer and 6-hr radiosonde comparisons since 1998 [Güldner and Spänkuch, **JAOT**, 2001]



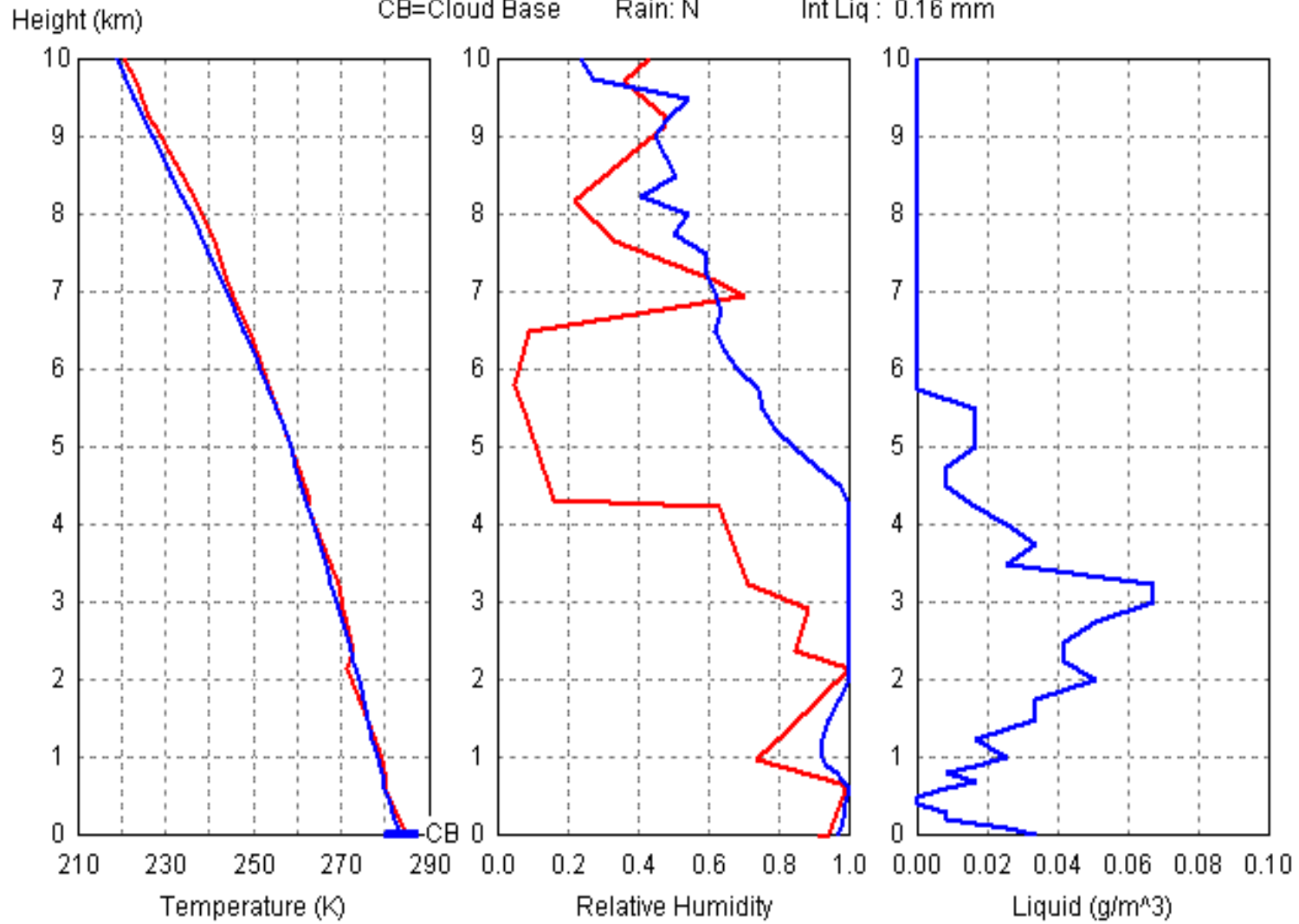
Radiometer-radiosonde comparison statistics (red and blue), and radiosonde representativeness error (gray) [Güldner and Spänkuch, **JAOT**, 2003; Ware et al., **Rad. Sci.**, 2003].



DOE ARM radiometers calibrate radiosondes for climate research.

[back to the table](#)

— RAOB(LDBG)17:00:00 09/23/08 Sta Alt: 115 m
— MP: 22:44:19 09/23/08 Tir: 276.8 K Int Vap: 2.54 cm
CB=Cloud Base Rain: N Int Liq: 0.16 mm



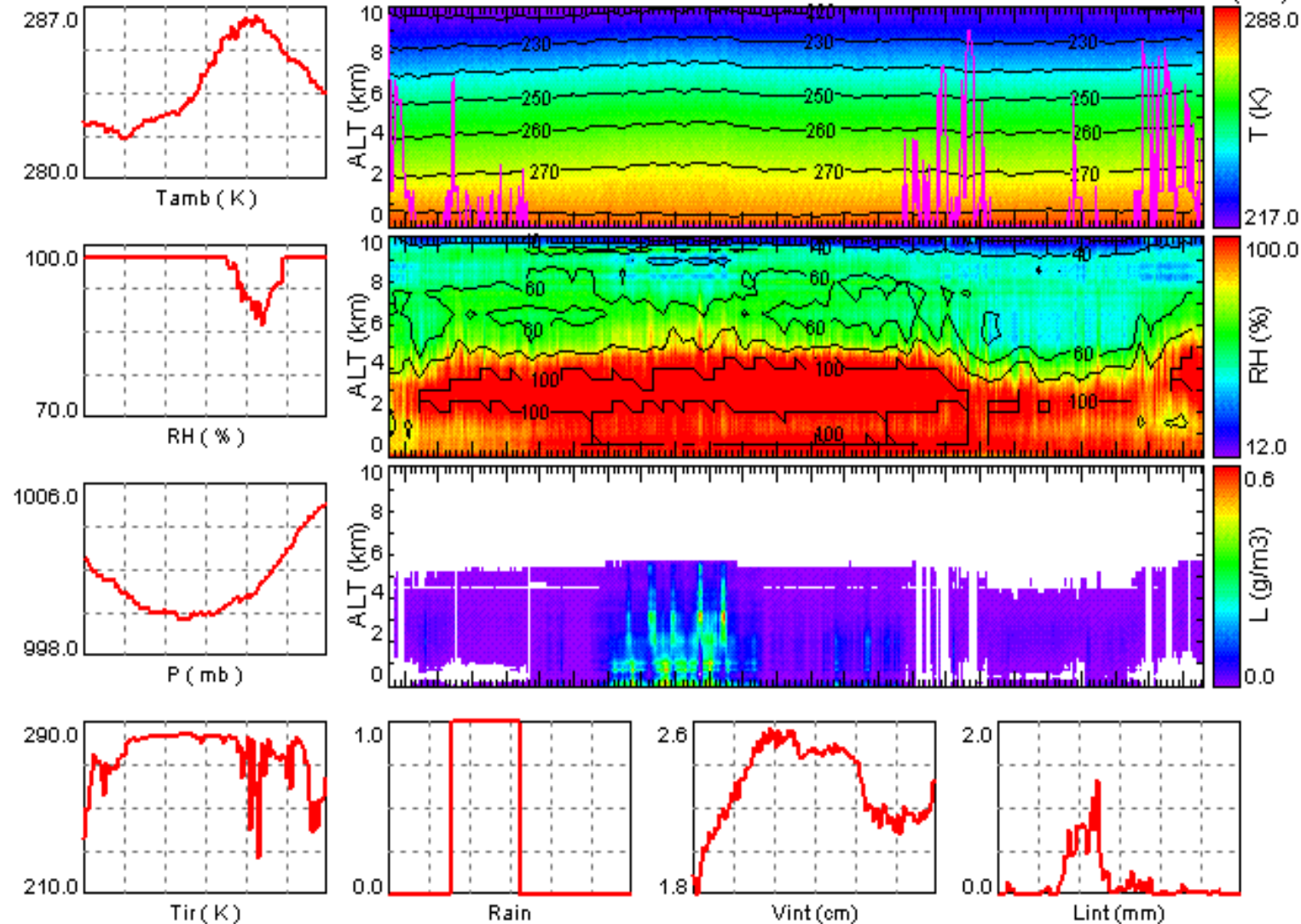
Radiometer (above) and radiosonde (below) temperature and humidity profiles, with ceilometer (asterisks), to 6 km height.

[back to the table](#)

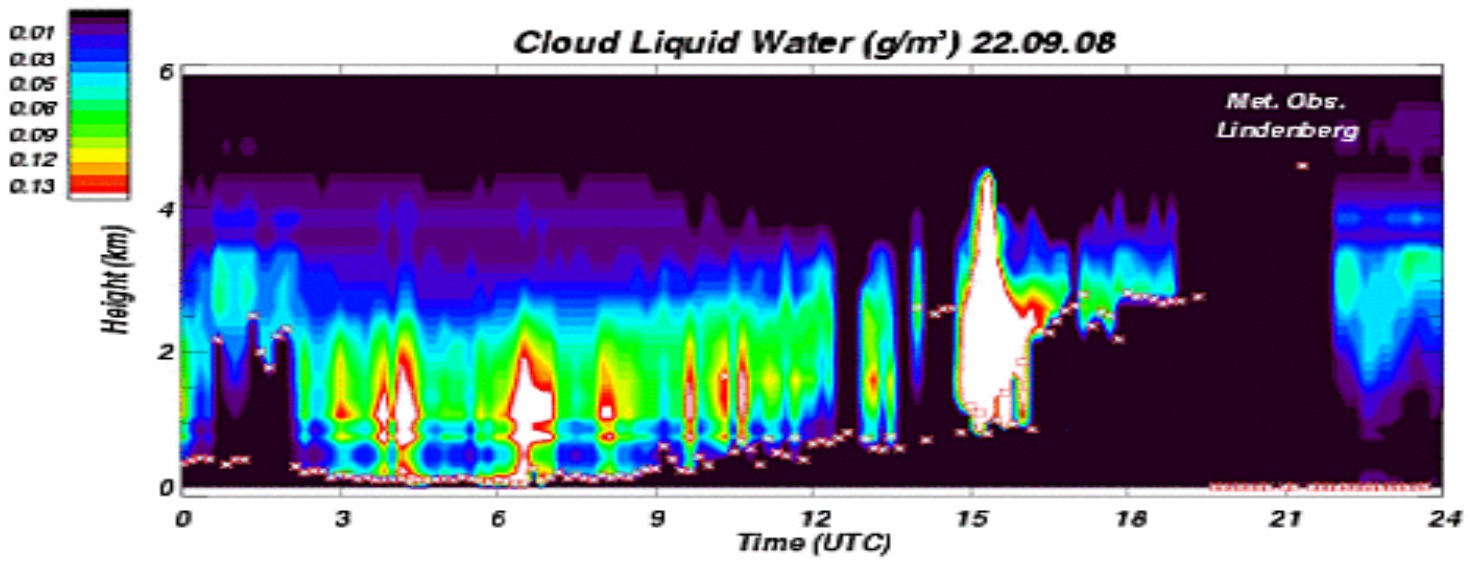
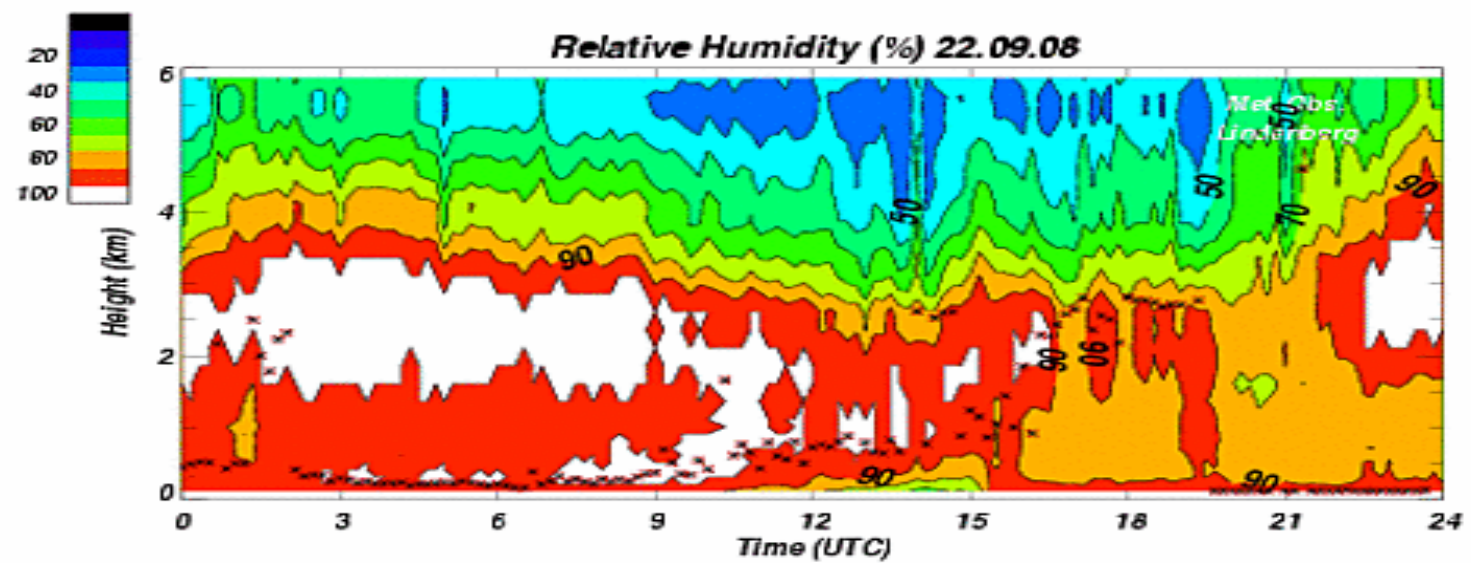
From: 21:29:19 09/22/08
To: 21:29:19 09/23/08



Radiometer
(above) and
radiosonde
(below)
temperature
and humidity
profiles, with
ceilometer
(asterisks), to
6 km height.



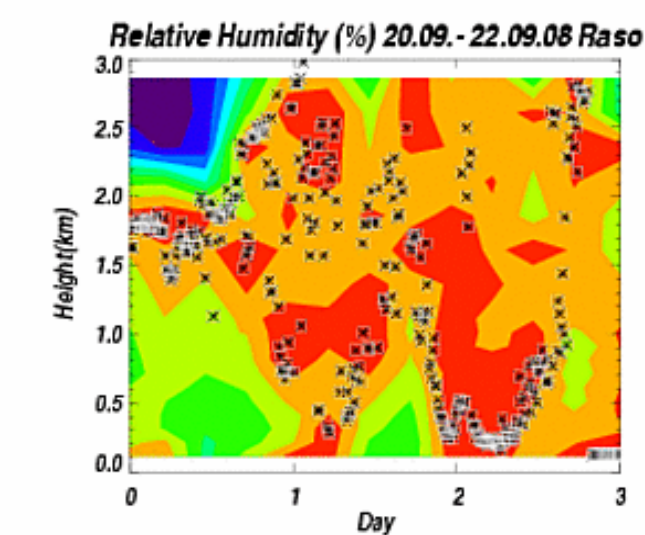
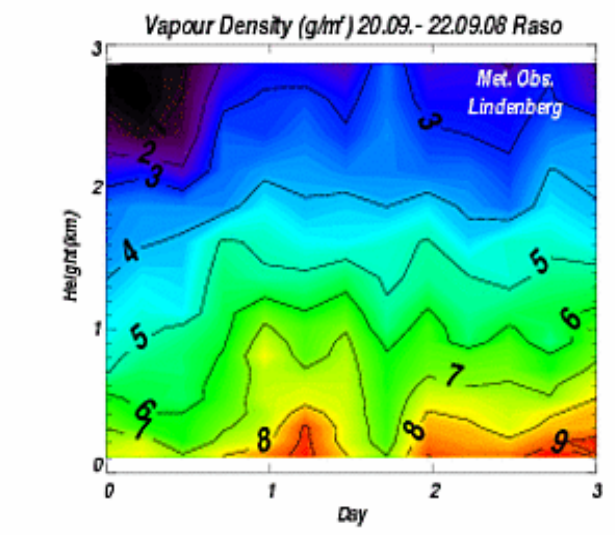
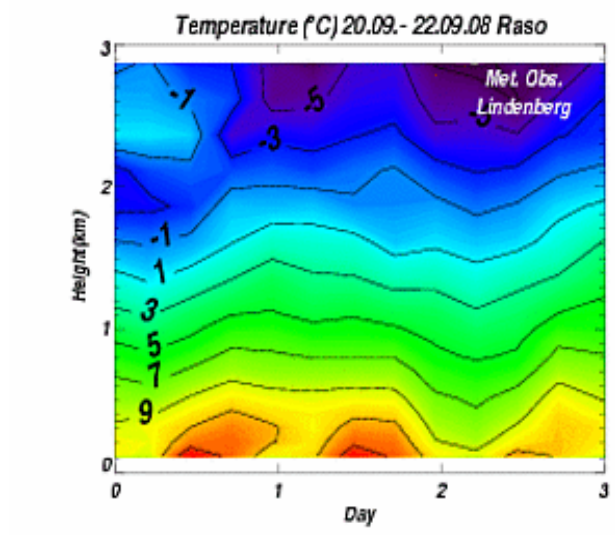
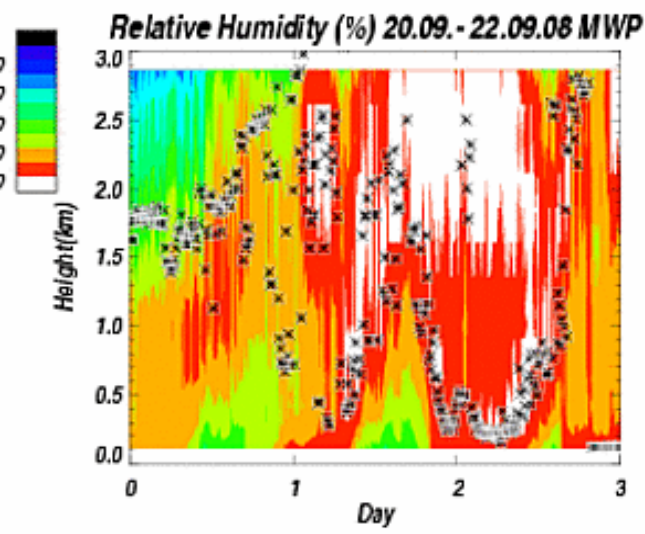
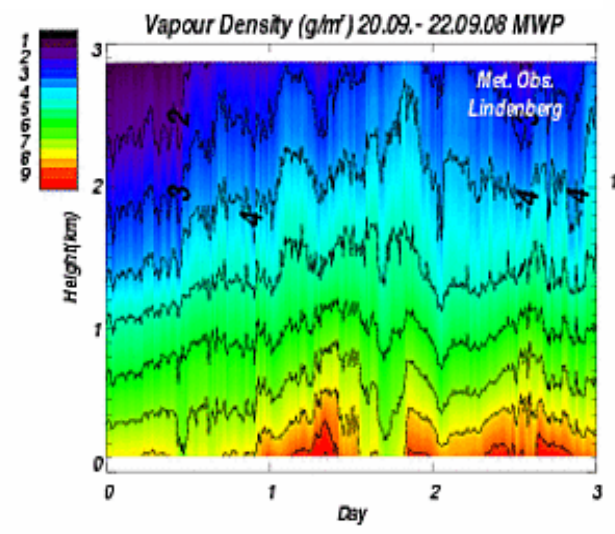
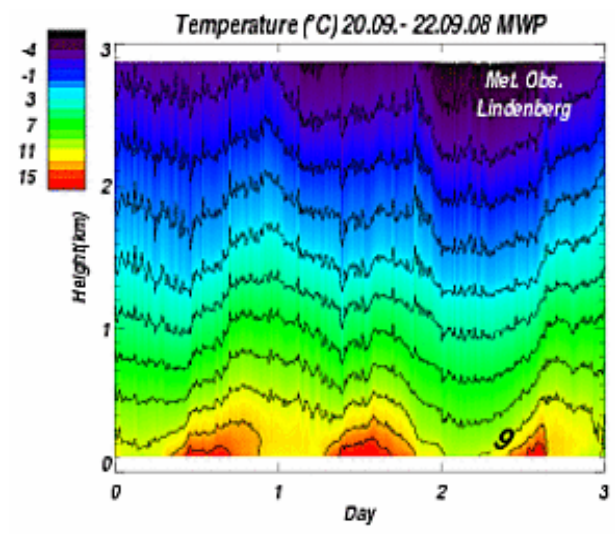
[back to the table](#)



□ cloud bottom height (ceiling)

Radiometer
RH and
liquid
density
profiles
and laser
ceilometer
cloud base
height.

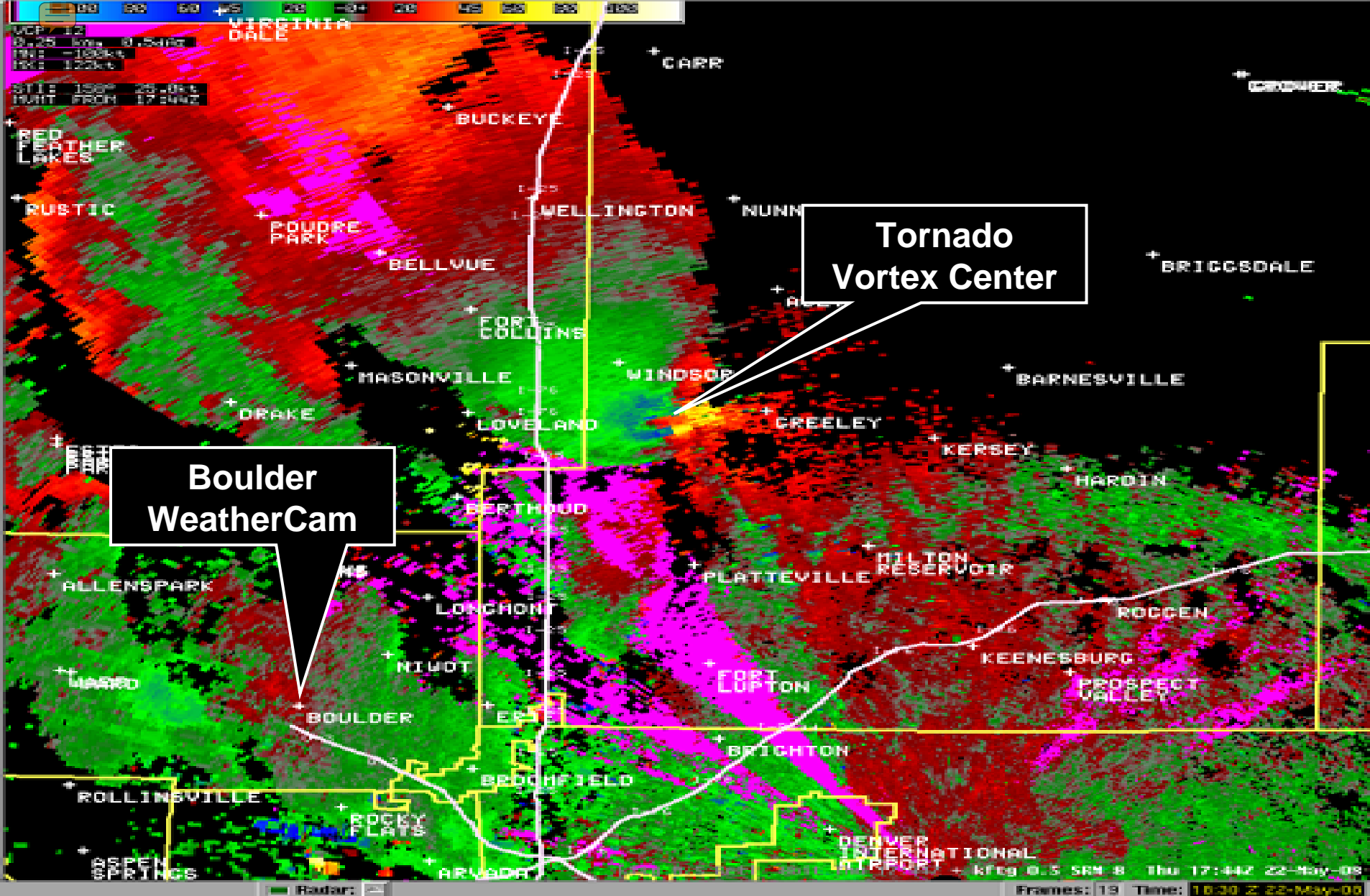
[back to the table](#)



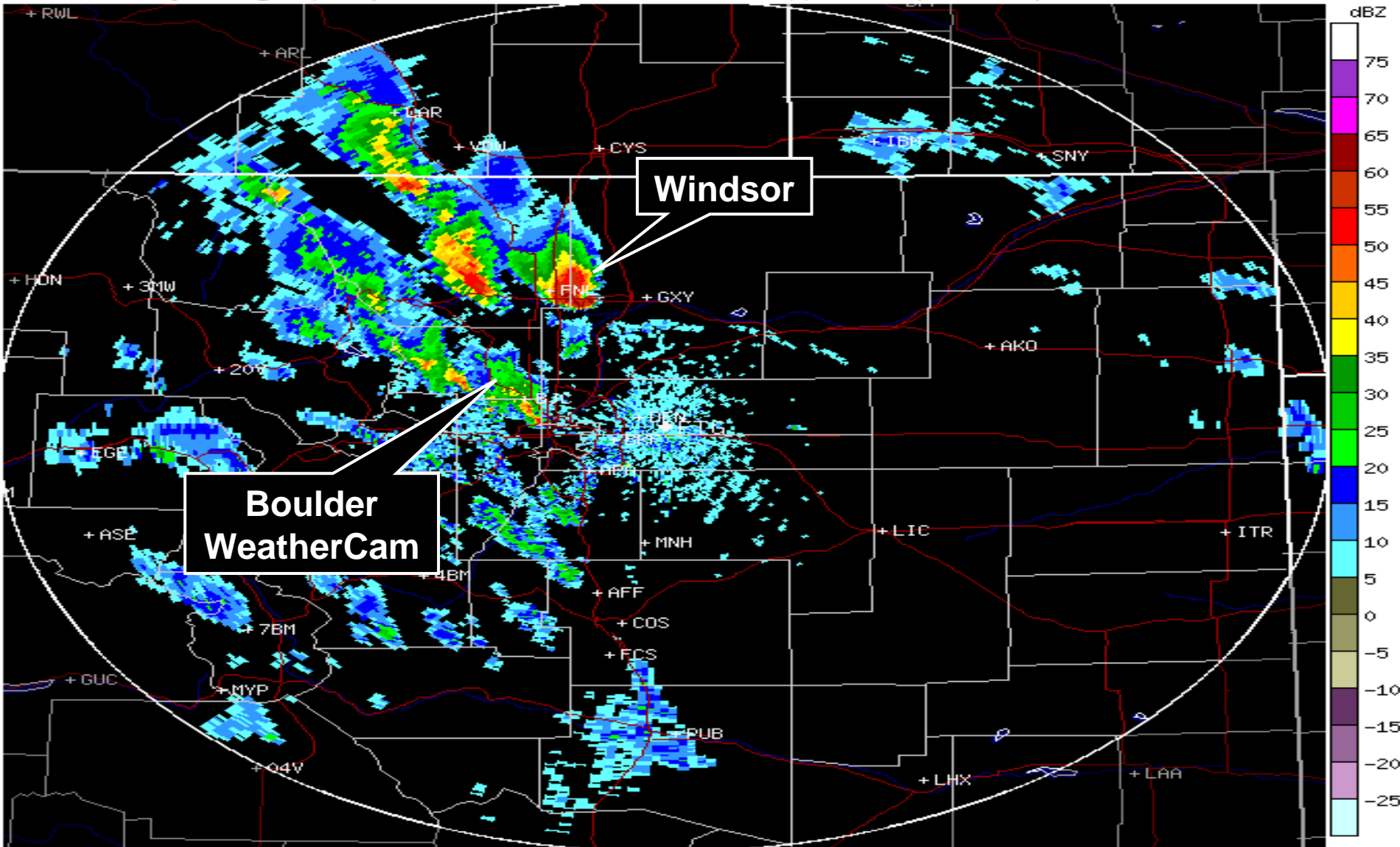
Deutscher Wetterdienst radiometer (top) and radiosonde (below) temperature, vapor density and relative humidity to 3 km height.

Colorado Tornadoes

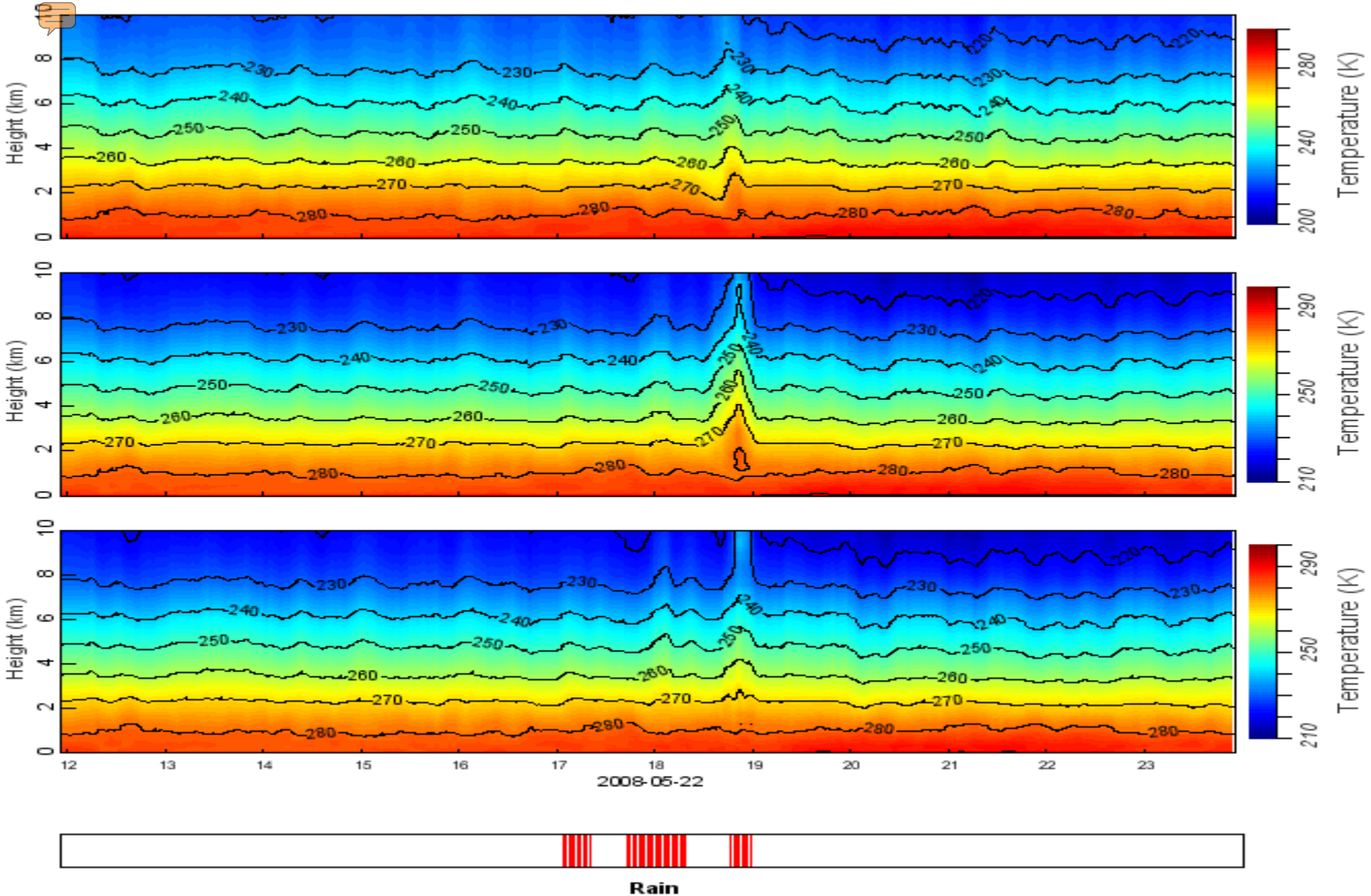
- A cluster of tornadoes swept through Northern Colorado on May 22, 2008.
- Radar, radiosonde and microwave radiometer (WeatherCam) observations are presented.
- WeatherCam provides continuous 3D thermodynamic and liquid structure.



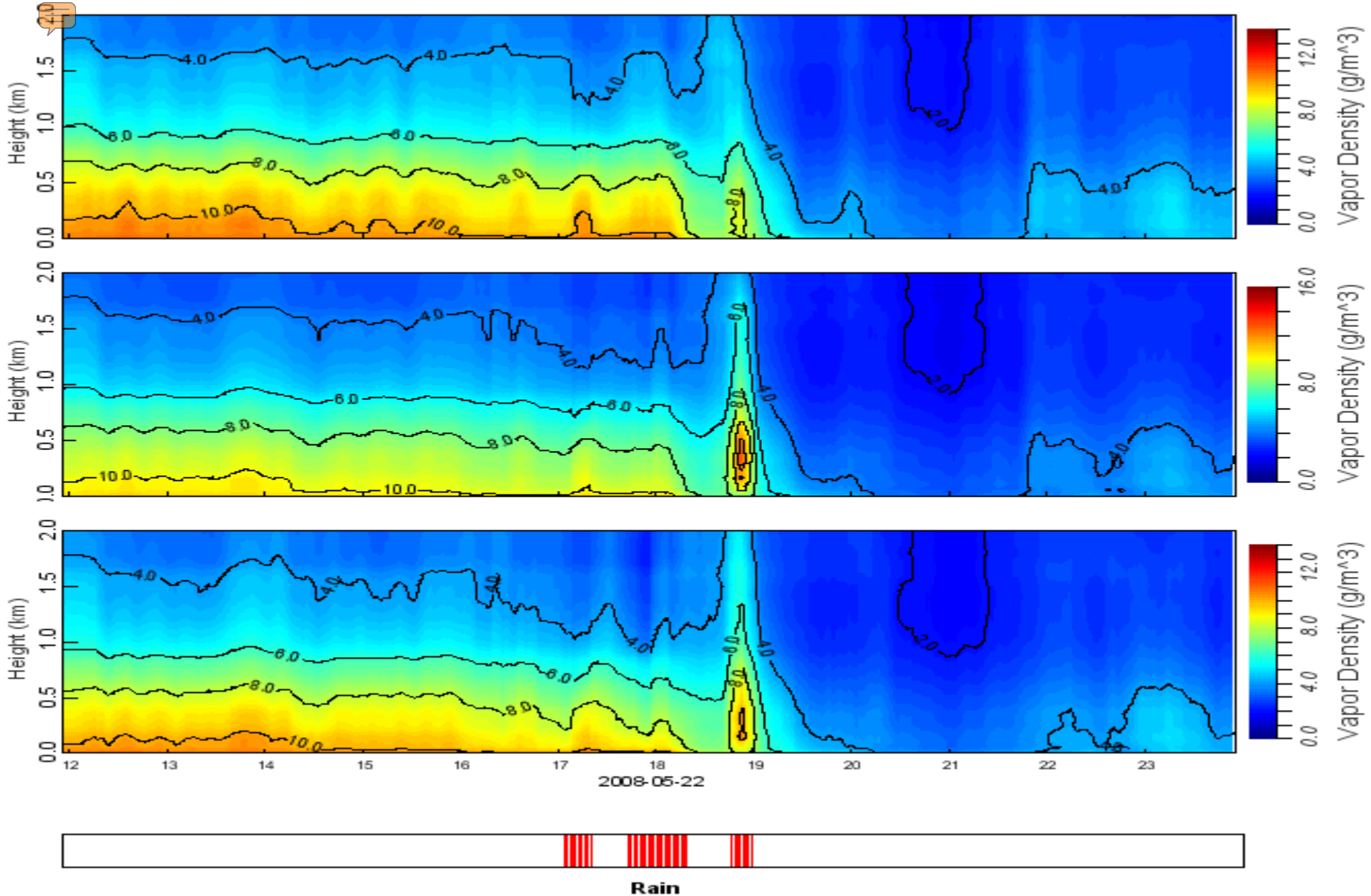
Denver radar showing 80 m/s (180 mph) winds near Windsor, Colorado, at 17:44 UT (11:44 local time) 5-22-08.



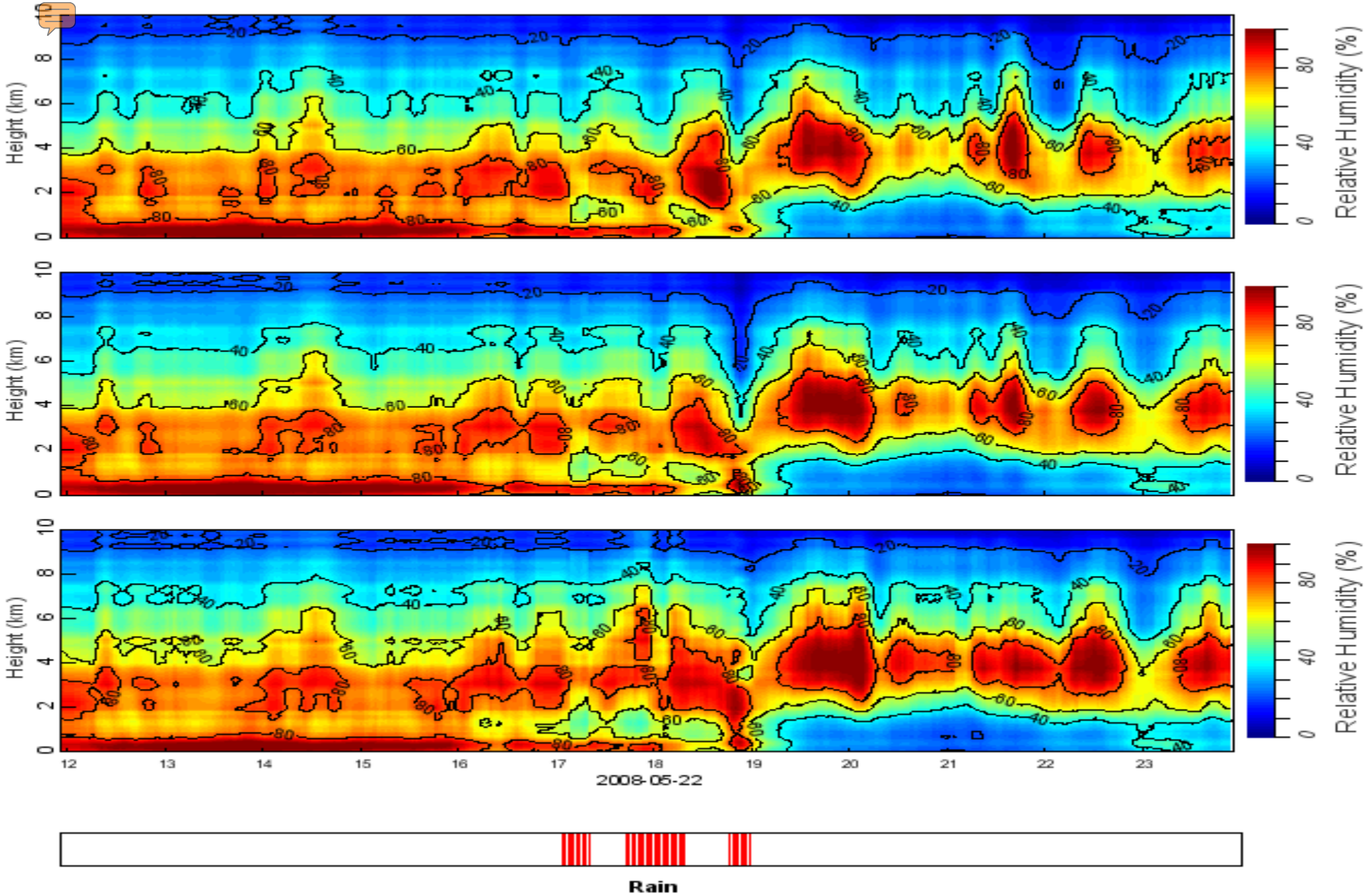
Strong radar reflectivities at Windsor and near Boulder at 17:44 UT (11:44 local time) 5-22-08.



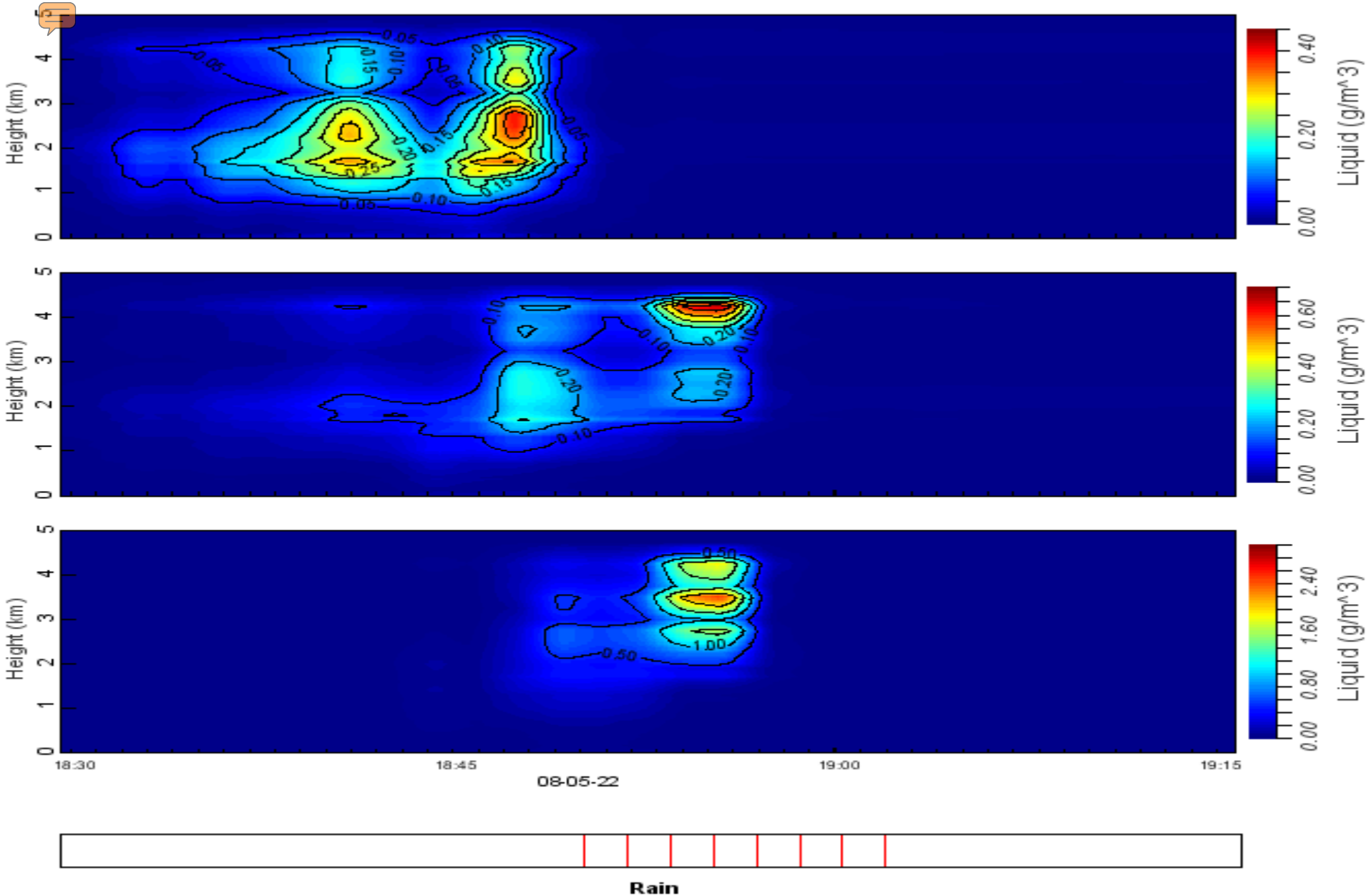
South, zenith and north (top to bottom) temperature profiles to 10 km height were strongly disturbed by local convection.



South, zenith and north vapor density profiles to 2 km height show high variability during local convection.



South, zenith and north relative humidity profiles to 10 km height show subsidence of dry air.



South, zenith and north liquid density profiles to 5 km height, 1830-1915 UT (1230-1315 local time).



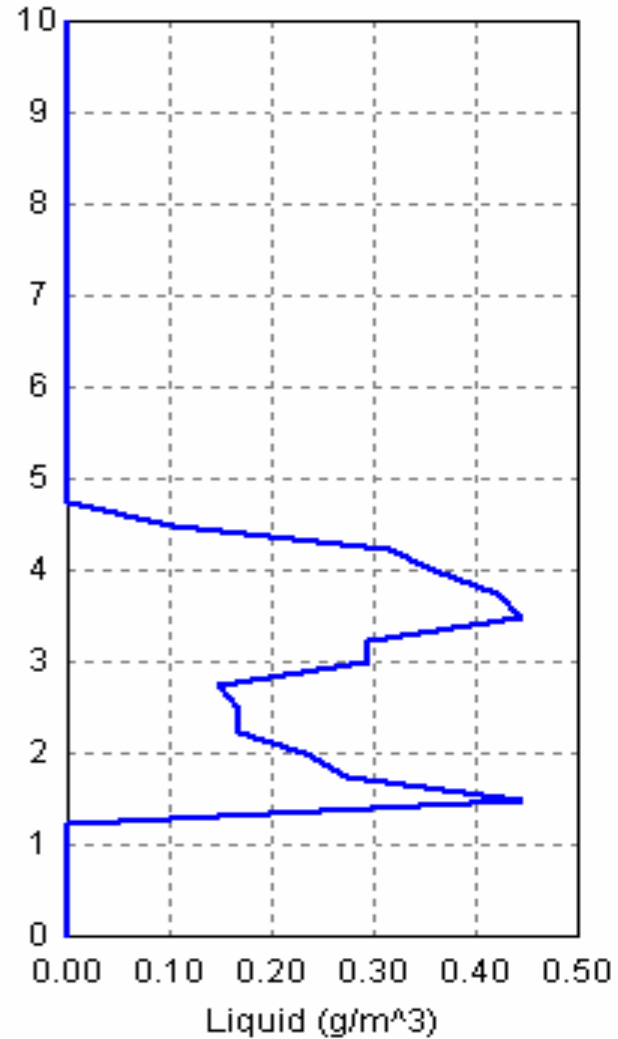
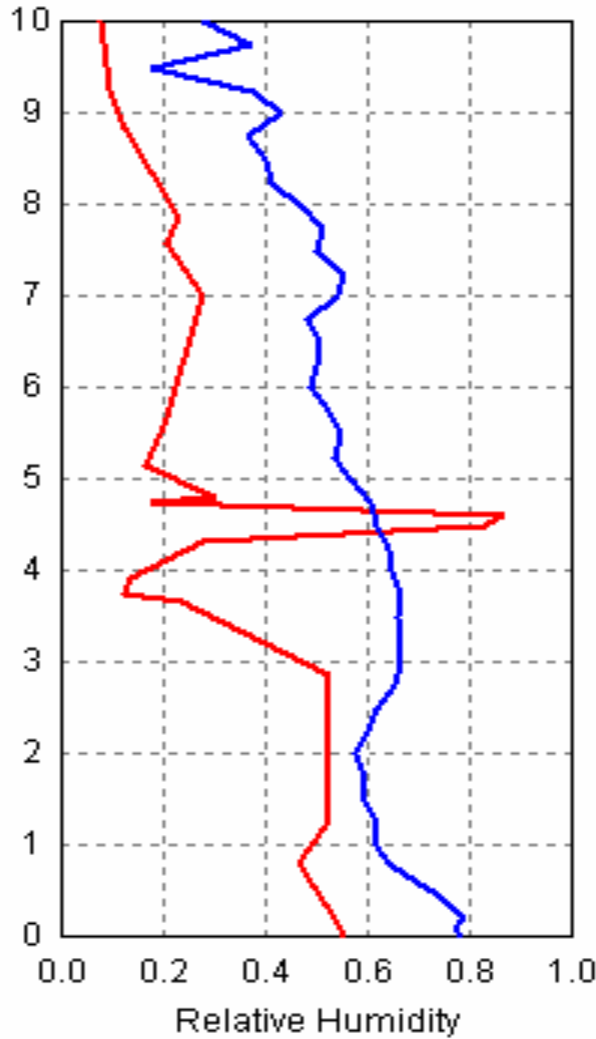
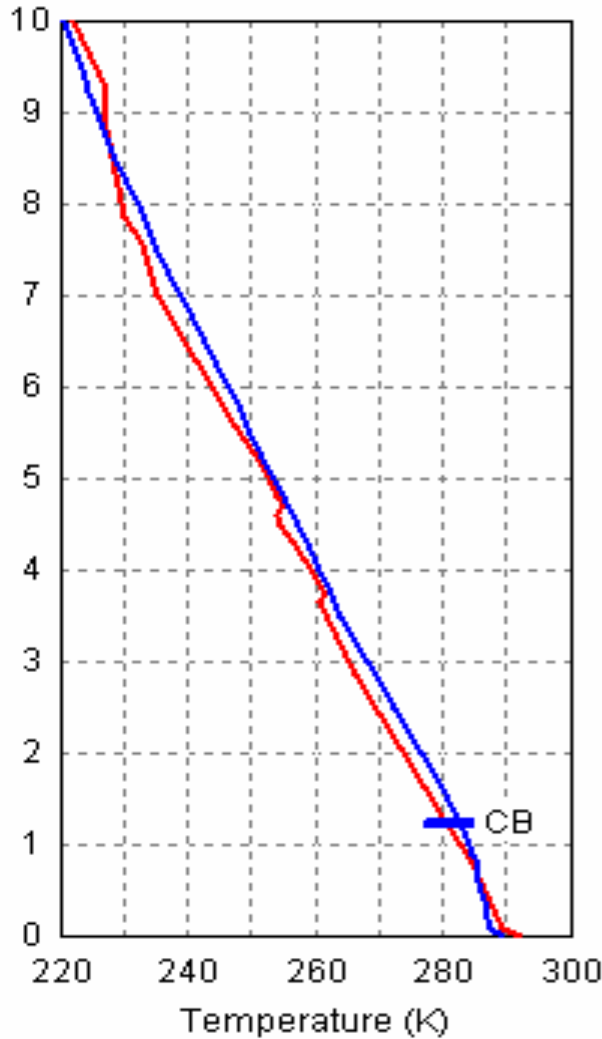
RAOB(DNR): 18:00:00 05/22/08 Sta Alt: 1611 m



MP: 18:00:20 05/22/08 Tir: 281.1 K Int Vap: 1.91 cm

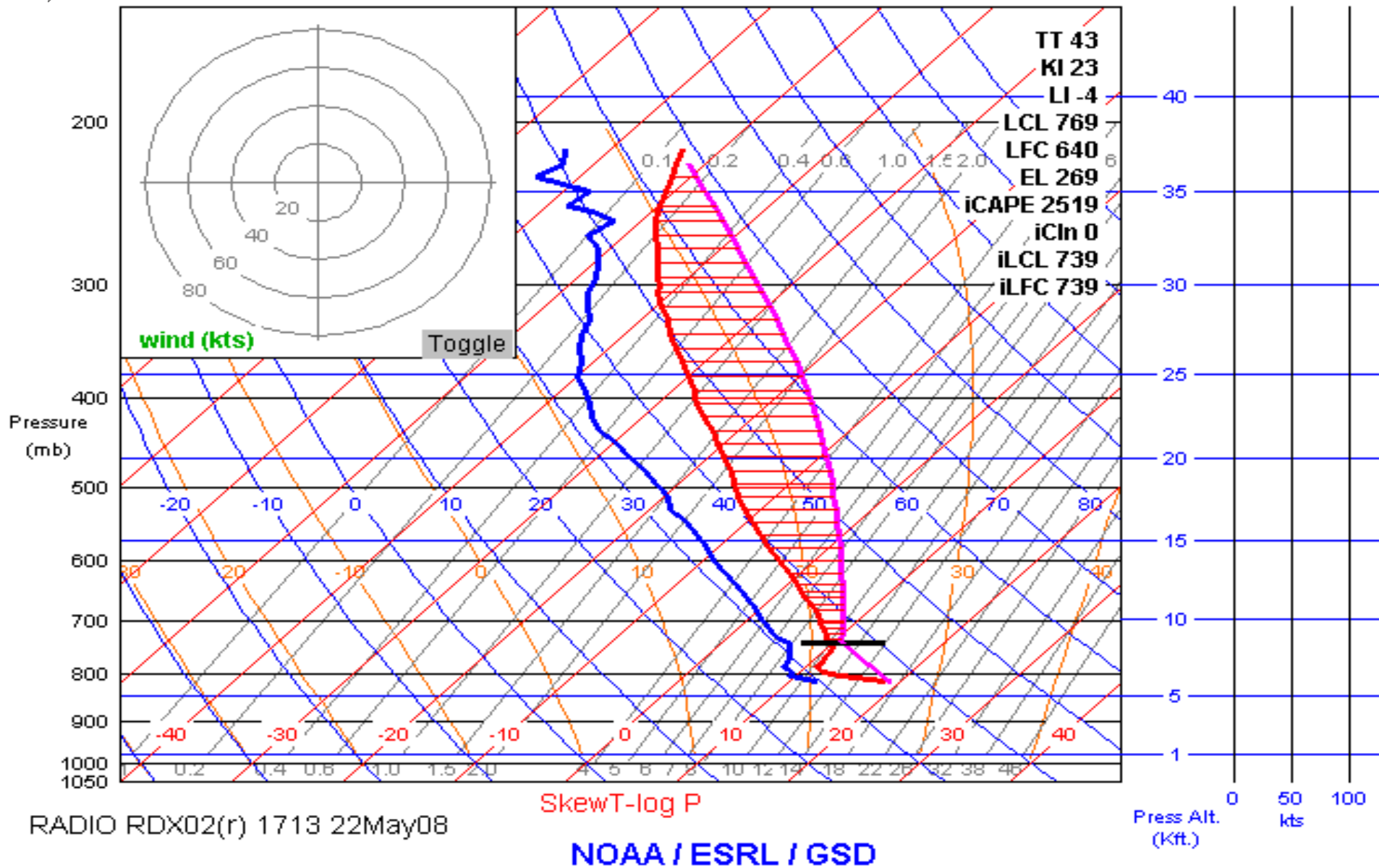
CB=Cloud Base Rain: N Int Liq : 0.87 mm

Height (km)

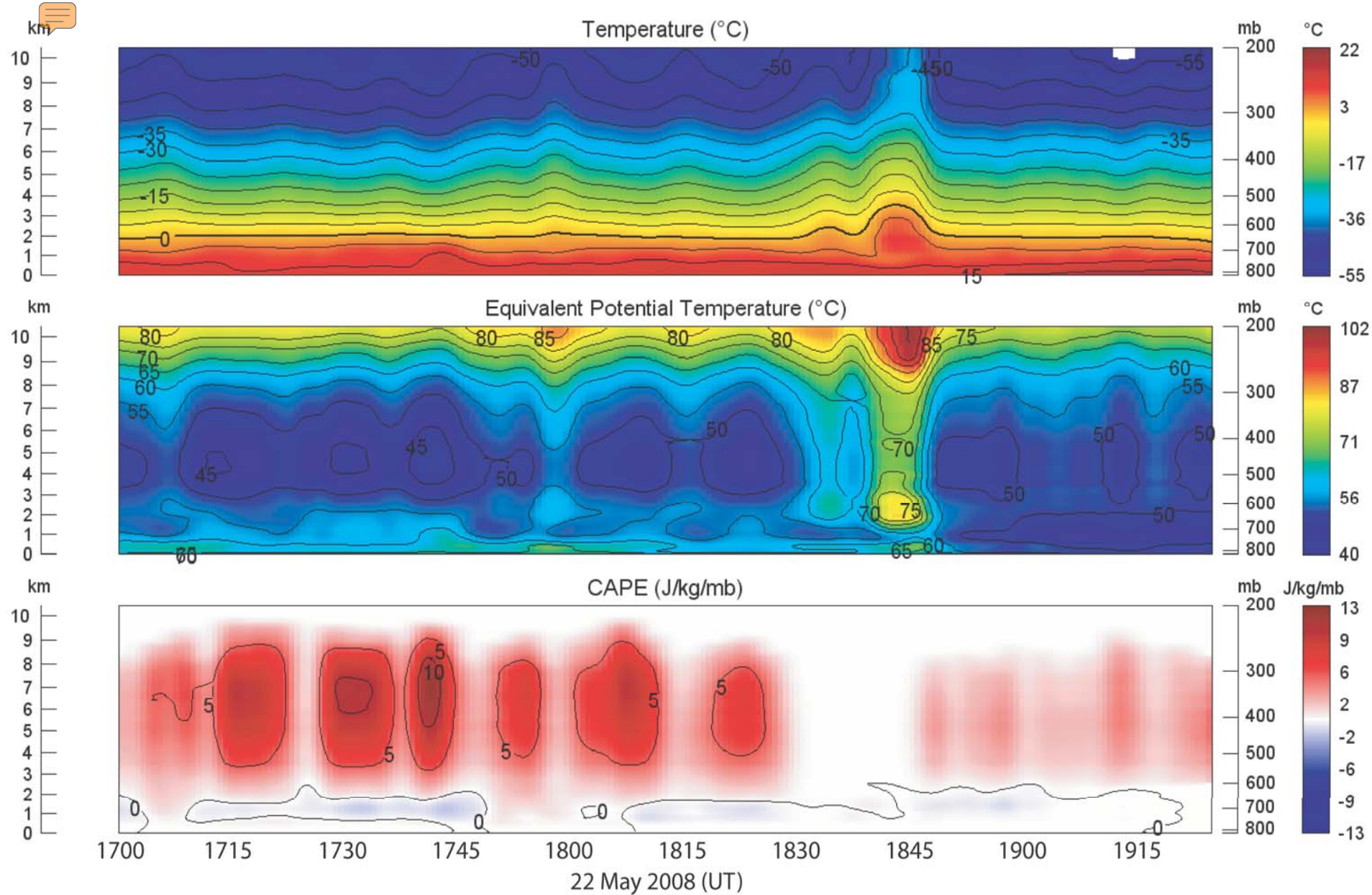


Denver radiosonde and Boulder WeatherCam temperature, relative humidity and liquid, 18:00 UT (12:00 local time) 5-22-08.

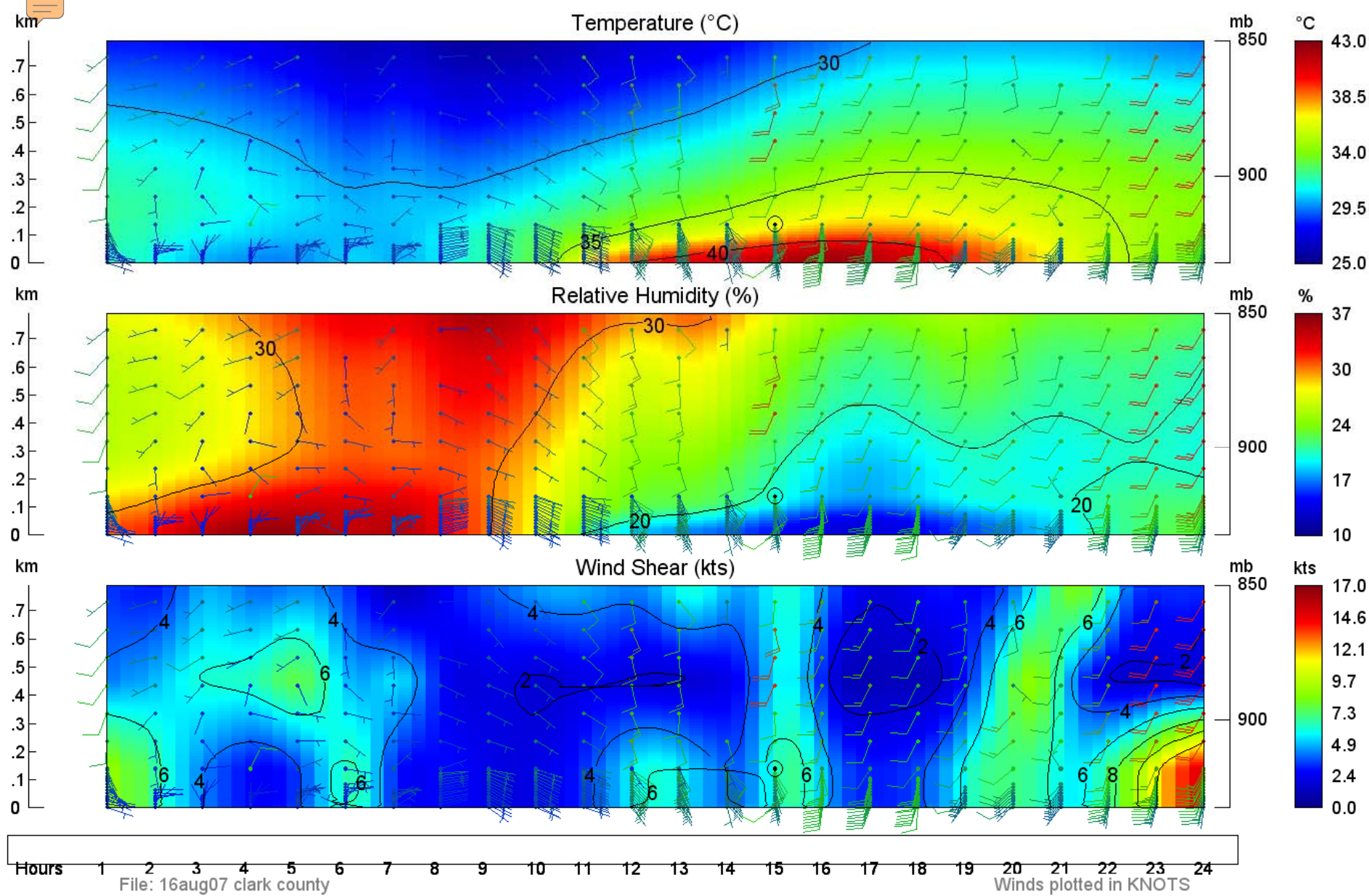
RADIO, 22-May-2008 17:13:00 (RDX02)



Boulder WeatherCam maximum CAPE = 2,519 J/kg
at 17:13 UT (11:13 pm, local time) 5-22-08.



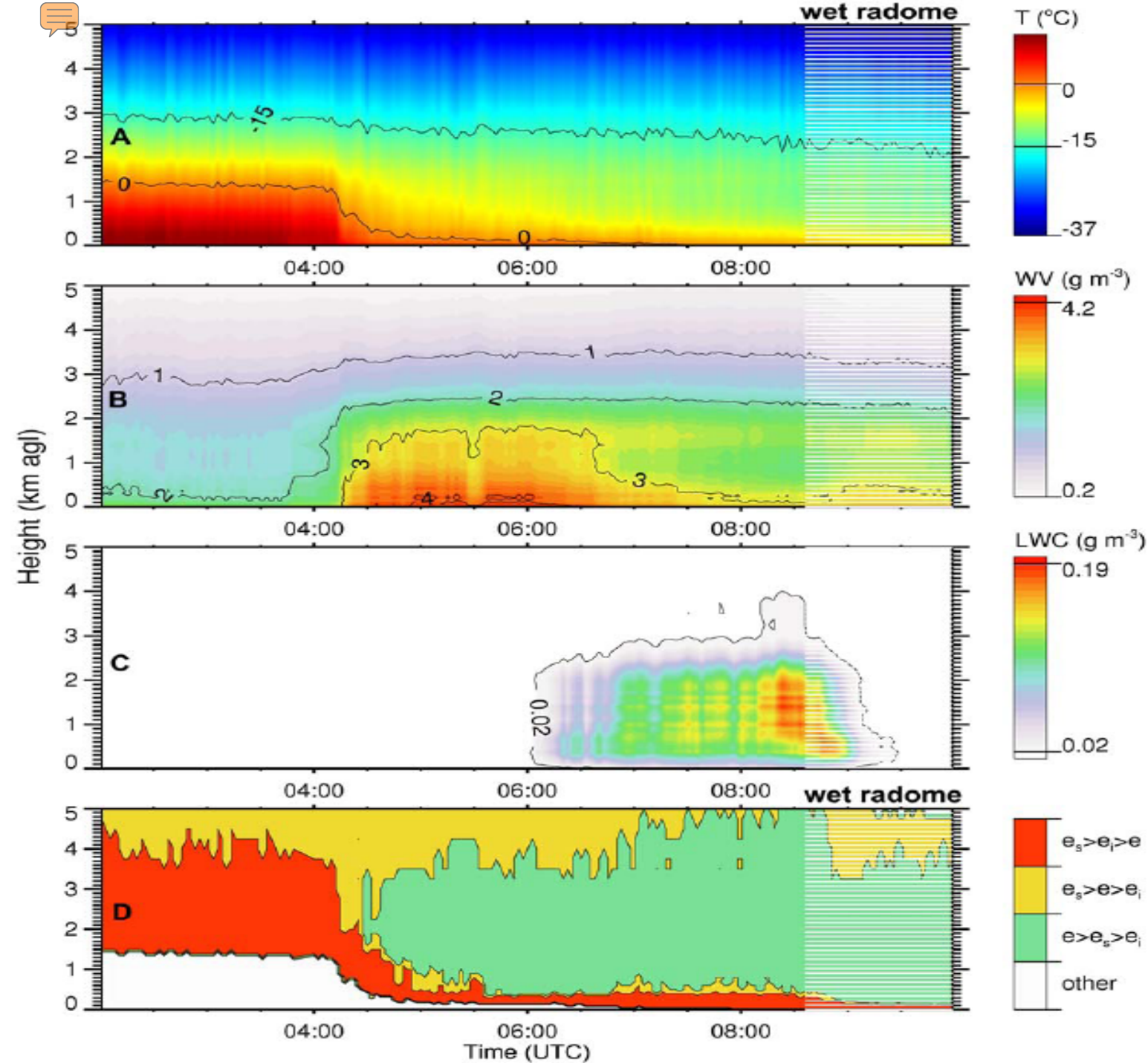
Temperature, equivalent potential temperature and CAPE (maximum CAPE just before 17:45 UT Windsor Tornado).



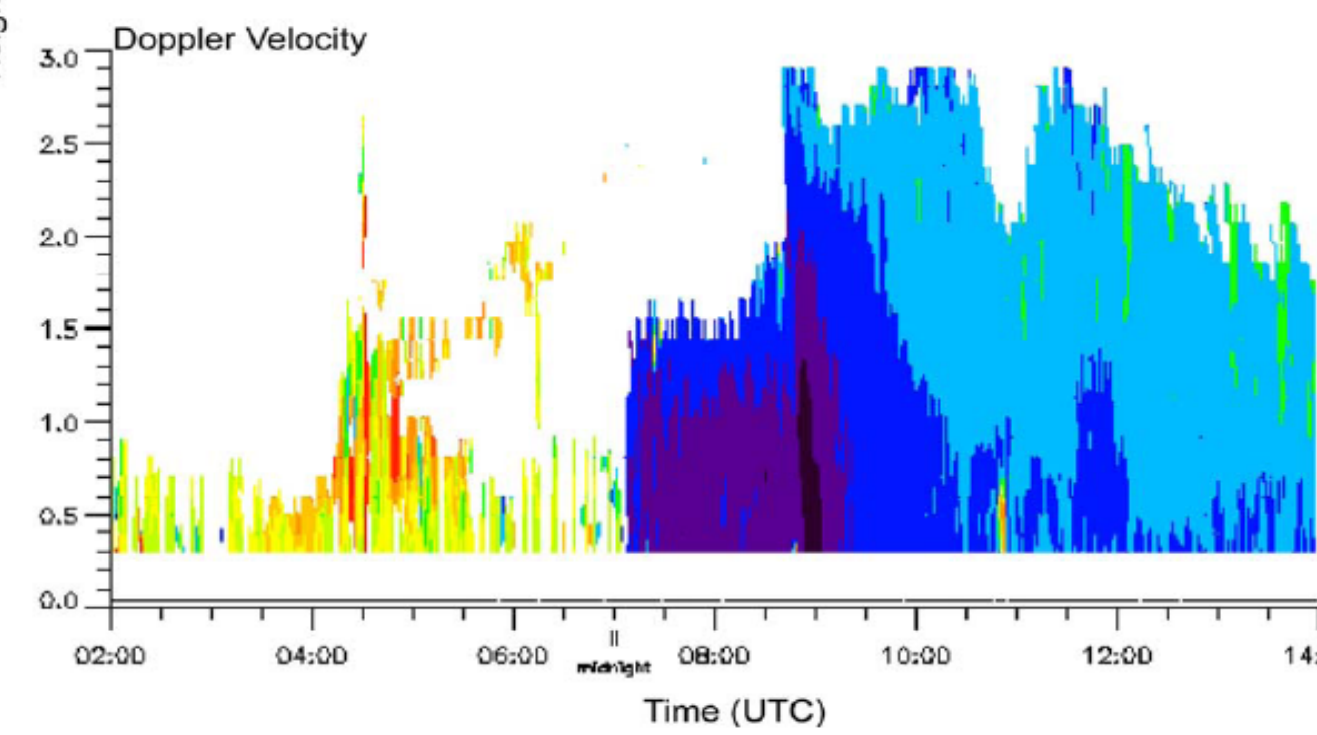
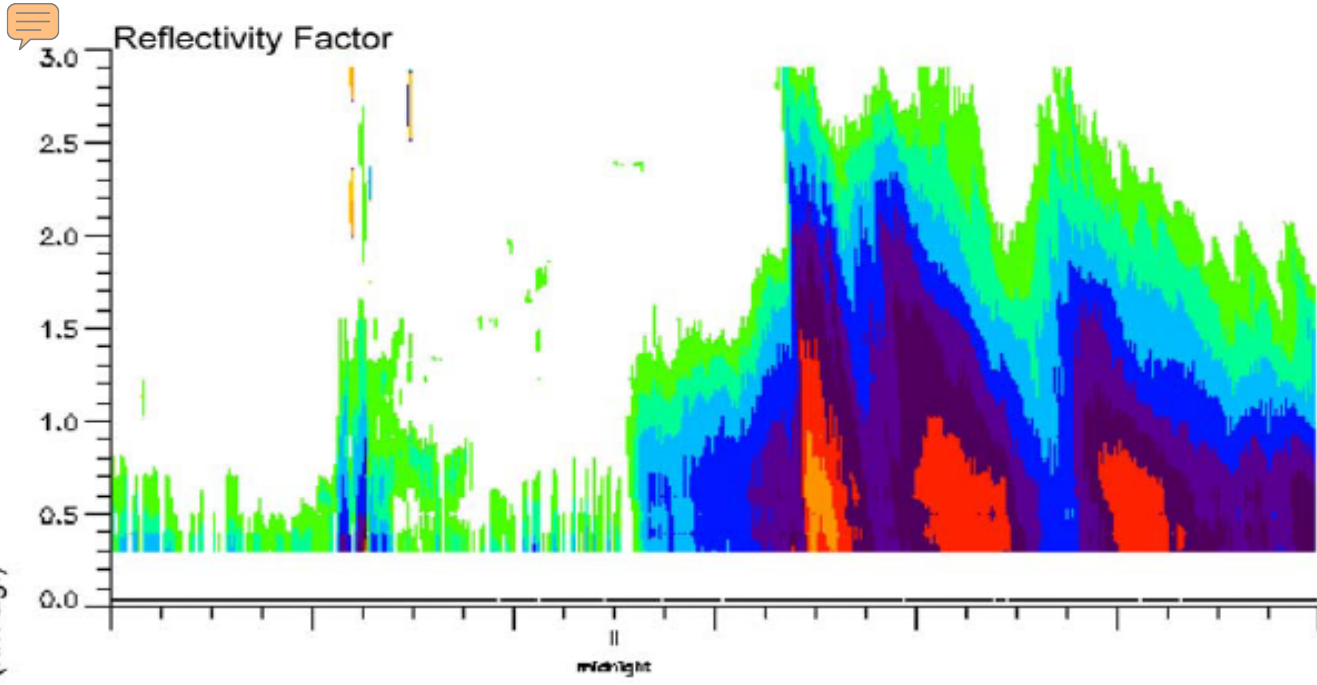
Real time boundary layer temperature, relative humidity and wind shear contour plots with wind barbs.

Meteorological Value of Ground-Based Passive Microwave Observations

- Microwave profiling delivers a continuous flow of temperature, humidity, and cloud liquid profile data
- Fresh radiometer data can feed weather forecast tools and indices developed for radiosondes
- Radiometers deliver unique cloud liquid profiles needed to initialize and update weather models, to monitor and forecast fog and aircraft icing hazard, and to identify opportunity for weather modification
- Microwave profiling provides automated upper air observations with very little human intervention



WeatherCam
 temperature,
 vapor and
 liquid profiles,
 showing
 genesis of
 powder snow
 via the
 Wegener-
 Bergeron-
 Findeisen
 process.



NCAR Wind Profiler observations of reflectivity and Doppler velocity during the 14 Feb 2008 upslope powder snowstorm at Boulder, Colorado

Ongoing Research

- A case study of the 22 May 08 Colorado tornadoes including assimilation of Radiometer, Wind Profiler and Doppler Radar data into high resolution models.
- Models include WRF, the Space and Time Mesoscale Analysis System (STMAS) and water vapor tomography.
- Other upper air data could include: CHILL radar, COSMIC, slant GPS (SuomiNet and GPS Solutions).
- Collaborators: NCAR MMM (Rizvi and Moncrieff) and RAL (Vivekanandan), ESRL (Xie and MacDonald), Vaisala (Frederick).



WeatherCam pencil beam (1°) radiometers can detect early stage convection at distances of 100 km or more.



**U.S. DOE ARM Program
Barrow, Alaska**



**Dubai International Airport
United Arab Emirates**



**German Weather Service
Lindenber**



**Met Service Canada
Vancouver Winter
Olympics**



**Hong Kong
Chek Lap Kok
International Airport**



**Chinese Meteorological
Administration
Beijing Olympics**