

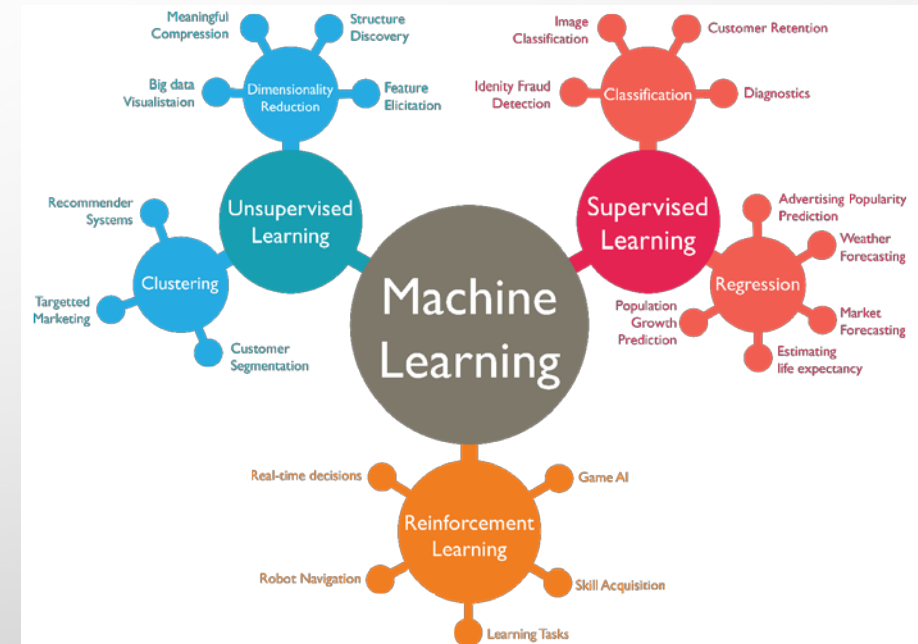
The background of the slide is a light gray gradient with several realistic water droplets of various sizes scattered across it. The droplets have highlights and shadows, giving them a three-dimensional appearance. The main title is centered in the upper half of the slide.

REDUCING TIME TO SCIENCE:
EVOLVING WORKFLOWS
FOR GEOSCIENCE
EDUCATION AND RESEARCH

UNIDATA USERS COMMITTEE – JUNE 2018

THEMES OF THE WEEK

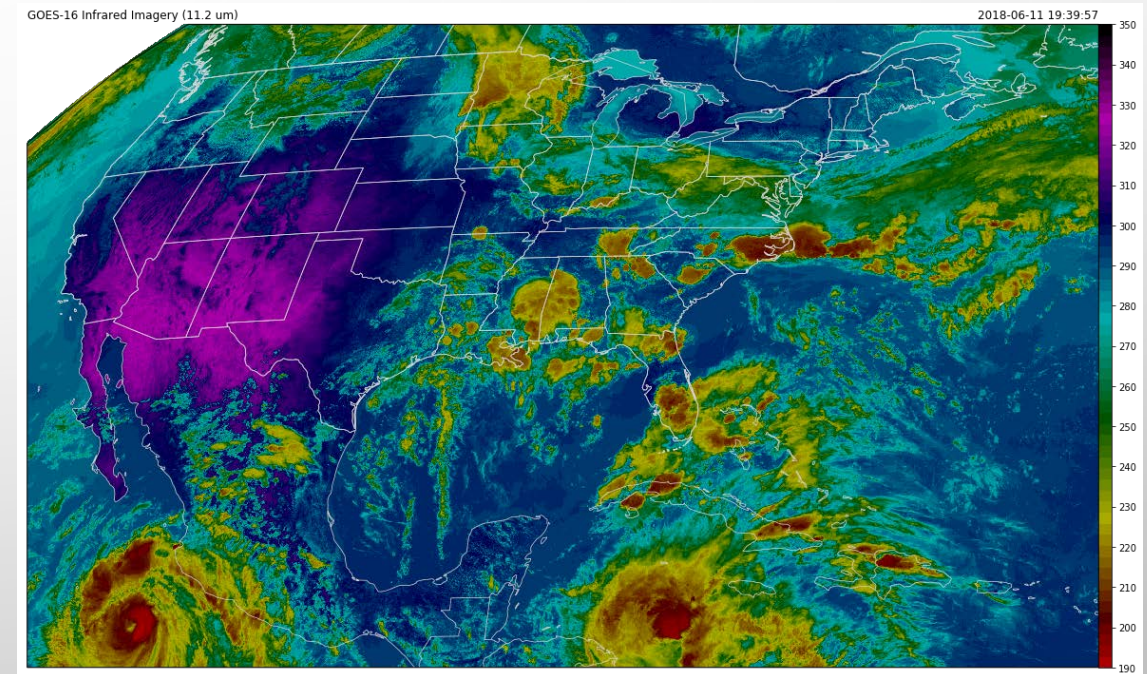
- MONDAY – DATA PROXIMATE WORKFLOWS
- TUESDAY – MACHINE LEARNING
- WEDNESDAY – USING GOES 16
- THURSDAY – USING ENSEMBLE MODEL OUTPUT



<https://www.linkedin.com/pulse/business-intelligence-its-relationship-big-data-geekstyle>

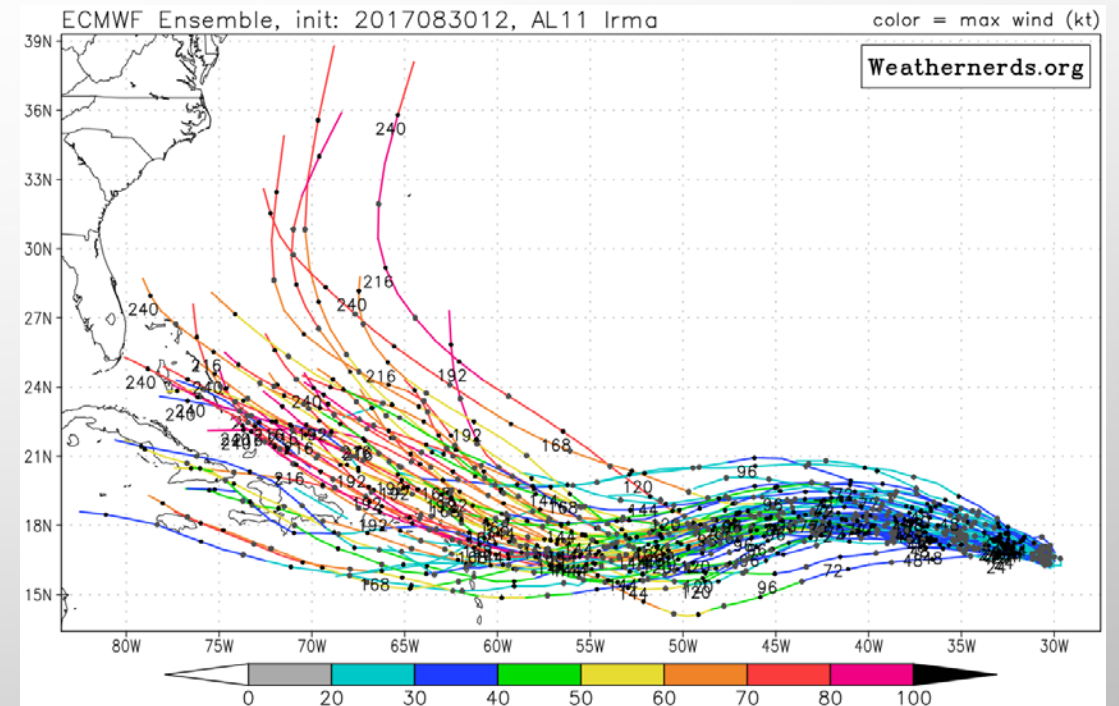
THEMES OF THE WEEK

- MONDAY – DATA PROXIMATE WORKFLOWS
- TUESDAY – MACHINE LEARNING
- WEDNESDAY – USING GOES 16
- THURSDAY – USING ENSEMBLE MODEL OUTPUT



THEMES OF THE WEEK

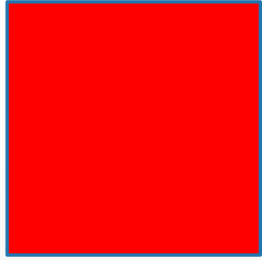
- MONDAY – DATA PROXIMATE WORKFLOWS
- TUESDAY – MACHINE LEARNING
- WEDNESDAY – USING GOES 16
- THURSDAY – USING ENSEMBLE MODEL OUTPUT



<http://cliffmass.blogspot.com/2017/09/the-hurricane-irma-forecast-triumph-or.html>

PRESENTATION FORMATS

- A MIX OF LECTURE AND "HANDS-ON" ACTIVITIES
- TENSION BETWEEN TRAINING AND LEARNING ABOUT NEW CONCEPTS
- "TAKING IT HOME" SESSIONS



RED/GREEN STICKY NOTES



- TO HELP WITH HANDS-ON ACTIVITIES
 - GREEN – EVERYTHING IS GOING WELL; NO PROBLEMS
 - RED – I NEED HELP; SOMETHING IS NOT WORKING CORRECTLY

- END OF THE DAY
 - GREEN – ONE THING THAT WENT WELL/LEARNED TODAY
 - RED – ONE THING THAT YOUR STRUGGLING WITH/NEED MORE INFORMATION ON

MEET AND GREET

- TURN TO YOUR NEIGHBORS AND BRIEFLY INTRODUCE YOURSELF!
 - NAME
 - SCHOOL/EMPLOYER
 - WHAT YOU ARE MOST EXCITED TO LEARN ABOUT THIS WEEK

CO-CHAIRS

- KEVIN GOEBBERT, VALPARAISO UNIVERSITY
- VICTOR GENSINI, NORTHERN ILLINOIS UNIVERSITY
- JOHN ALLEN, CENTRAL MICHIGAN UNIVERSITY

QUESTIONS?

- DON'T HESITATE TO ASK!